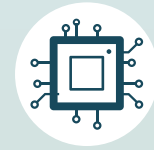


## Why Invest Now



### Early Mover Advantage and Access to Enhanced Computing Power

Early mover advantage in deploying quantitative strategies in Asia can lead to potential higher expected returns.

With improvements in technology, investors can now access the enhanced computer power of Quantitative Learning.



### Opportunities in Shariah Investments

Outstanding Sukuk remain small compared to conventional bonds. Low supply and wide credit spreads offer attractive returns.



### Leverage on Maybank Asset Management Group's (MAMG) Regional Capabilities

MAMG has established a strong regional presence with offices in Singapore, Malaysia and Indonesia.



### Stronger Economic Growth in Asia

Asia remains to be the global investment focus as Asian countries have stronger economic growth profiles compared to other regions.

Investors will be able to participate in the potential economic upside of Asia through this Fund.



### Systematic ESG Integration into Investment Processes

ESG Risk Scores (provided by our ESG Data Partner, Sustainalytics) are used as a factor in the multi-factor model. Higher ESG Risk Scores mean lower chance of being selected for investment.

## Maybank Asian Growth and Income-I Fund



Seasoned fund managers with Asian expertise



More than 15 years of investment expertise



**Rachana Mehta**  
Regional Co-Head of Fixed Income



**Mark Chua**  
Fund Manager and Lead Data Scientist

<b>Fund Manager</b>	Rachana Mehta and Mark Chua		
<b>Inception Date</b>	14 <sup>th</sup> October 2021		
<b>Sales Charge</b>	Up to 5%		
<b>Management Fee</b>	1.25% p.a.		
<b>ISIN Codes</b>	<b>Class A - Accumulation</b> SGD Acc: SGXZ62798434	<b>Class A - Distribution</b> SGD Dist: SGXZ86797644	<b>Class I</b> SGD: SGXZ91933911
<b>Bloomberg Tickers</b>	<b>Class A - Accumulation</b> SGD Acc: MGIIAAS SP	<b>Class A - Distribution</b> SGD Dist: MGIIADS SP	<b>Class I</b> SGD: MGIIINS SP

#### Important Information

This document has been prepared solely for informational purposes with no consideration given to the specific investment objective, financial situation and particular needs of any specific person and should not be used as a basis for making any specific investment, business or commercial decisions. This document does not constitute (1) an offer to buy or sell or a solicitation of an offer to buy or sell any security or financial instrument mentioned in this document and (2) any investment advice or recommendation. Investors should seek financial or any relevant professional advice regarding the suitability of investing in any securities or investments based on their own particular circumstances before making any investments and not on the basis of any recommendation in this document.

Past performance is not an indication of future performance. The Fund or any underlying fund may use or invest in financial derivative instruments. Investors should note that the value of units and income from them, if any, may rise or fall. Accordingly, investors may receive less than originally invested. Investors should be aware of the risks involved when investing. Please seek clarification on the potential risks that may arise prior to any decision made to invest in any investments. Investments in fund are not deposits in, obligations of, or guaranteed or insured by Maybank Asset Management Singapore Pte Ltd. A copy of the prospectus or offering document is available and may be obtained from Maybank Asset Management Singapore Pte Ltd and its appointed distributors or our website ([www.maybank-am.com.sg](http://www.maybank-am.com.sg)). Investors should read the prospectus/offering document (including risk warnings) before deciding to invest.

The opinions, analysis, forecasts, projections and/or expectations (together referred to as "Information") contained herein are inputs provided by entities within Maybank Asset Management Group which have been obtained from sources believed to be reliable and are based on the technical investment expertise. Maybank Asset Management Group makes no representation or warranty, expressed or implied that such Information is accurate, complete or verified and should not be relied to as such. The Information contained herein are published for the recipients' reference only and is subject to change without notice. Maybank Asset Management Group accepts no liability for any direct, indirect or consequential loss arising from use of this presentation. No part of this document may be distributed or reproduced in any format without the prior consent of Maybank Asset Management Group. This advertisement has not been reviewed by the Monetary Authority of Singapore.

#### For more information or to obtain a copy of the prospectus:

Email: [enquiries@maybank-am.com.sg](mailto:enquiries@maybank-am.com.sg)  
Telephone: 6231 5082/6231 5083/6231 5084  
Facsimile: 6339 1003  
[www.maybank-am.com.sg](http://www.maybank-am.com.sg)



Maybank Asset Management Singapore Pte Ltd  
2 Battery Road #08-01 Maybank Tower Singapore 049907  
Company Registration No. 200812589K

## Reap the best of both worlds with Shariah-compliant Asian stocks and Global Sukuk

### Maybank Asian Growth and Income-I Fund #ForYou

An Islamic Wealth Management Solution, this fund utilises a stock selection model that integrates Environmental, Social and Governance (ESG) factors so you can invest in sustainable companies with growth opportunities across Asia. More ways we are Humanising Financial Services.



Humanising Financial Services.



## Why Invest In The Fund

### Singapore's 1<sup>st</sup> Shariah Asian Balanced Fund

Enjoy potential  
**5.0% p.a.<sup>1</sup>**  
monthly distributions

The Fund's investment objective is to provide capital growth and income through investments in equities that comply with Shariah Principles and global Islamic securities instruments known as Sukuk.

**50%**  
Global Sukuk

**Maybank Asian Growth and Income-I Fund (MAGI-I)**  
Neutral Asset Allocation

**50%**  
Asia Shariah Equity  
With Environmental, Social and Governance (ESG) integration

This is for guidance and not indicative of future allocation.

<sup>1</sup>The making of distributions is at our absolute discretion and that distributions are not guaranteed. The making of any distribution shall not be taken to imply that further distributions will be made and we may at any time determine that no distributions will be made in the event that the income and capital gains are insufficient. We reserve the right to vary the frequency and/or amount of distributions. Distributions from the Sub-Fund may be made out of the income, capital gains or capital of the Sub-Fund.

### Key Fund Features



**The Best of Both Worlds**  
Quantitative investing combined with the vast experience of our Fund Managers.



**Capture Opportunities in Asia**  
Active Shariah-compliant mixed assets portfolio investing in Equities, Sukuk and Gold ETFs. Quant model drives asset allocation.

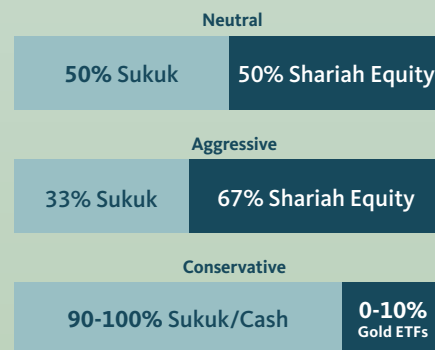


**Diversification From Index**  
Portfolio holdings are different from the index, enabling better potential returns versus the market.

### Who Should Invest In Shariah-Compliant Funds

The Fund is suitable for investors who:

- seek capital growth and income.
- are comfortable with the volatility and risks of Shariah-compliant equities and Global Sukuk.
- are comfortable with the exposure to and the investment policy and approach of a Shariah-compliant fund.



Source: Maybank Asset Management Singapore Pte Ltd, April 2022. This document represents the views and opinions of the Fund Manager and should not be used as a basis for making any specific investment business or commercial decision.

## The Fund's Uniqueness



### Quant Model Approach

- Combining fundamental investing with application of data science in quant investing to produce an asset allocation that suits market conditions.
- Stock selection made easier and faster with machine learning.

### What is Quant Investing

An innovative quantitative/systematic investment approach that uses

**Mathematical Modelling**

**Computer Systems**

**Data Analysis**

to enhance its investment decisions and are not influenced by human emotions.



### Enhanced Investment Decisions

- Achieve portfolio diversification, enhance performances versus index and increase processing speed.
- Systematic monthly portfolio rebalancing as market conditions change.



### ESG Integration

- ESG features allow investors to access sustainable investing.
- Firms with lower ESG Risk Scores have a higher chance of being selected for investment.

### Equity Investment Approach

- ✓ A proprietary Multi-Factor Quant Model is used for stock selection and incorporating ESG data on firm's sustainability performance.

### Sukuk Investment Approach

- ✓ Sukuk investment strategy uses our proprietary Thematic Radar, Country Radar and Credit Radar to manage Sukuk selection and risks.

Source: Maybank Asset Management Singapore Pte Ltd, April 2022

## Shariah-Compliant Funds

**Adhere to Shariah Principles**

**No Interest-Bearing Instruments**

**Supervised by Certified Shariah Advisors**

### What Constitutes as Non-Shariah Compliant



**Conventional Banking**  
Due to the existence of interest (riba) which is non-Shariah compliant.



**Gambling**  
Activities prohibited by Shariah principles including gambling (maisir) and taking excessive risks (gharar).

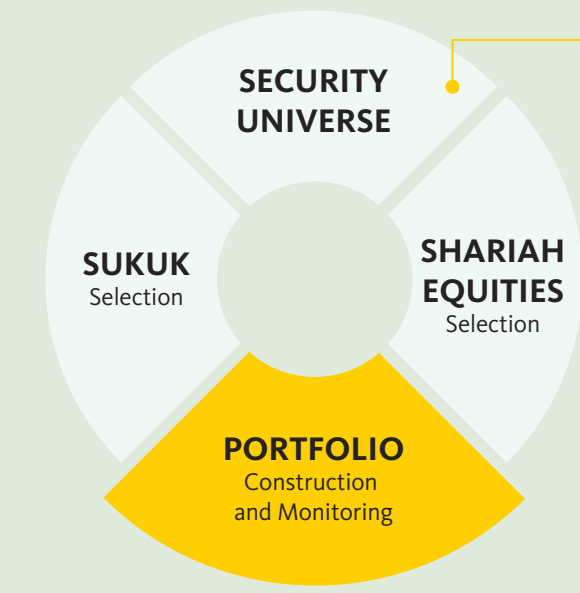


**Alcohol and Non-Halal Food**  
Exclude businesses or sectors that deal with alcohol, pork, etc.



**Prohibited (Haram) Businesses**  
Businesses that are deemed un-Islamic or immoral, e.g. tobacco, illicit media and weapons.

### Shariah Screening Process for Maybank Asian Growth and Income-I Fund



Approved by Amanie

**Security Selection**  
Maybank Asset Management will select from a list of Sukuk and Shariah-compliant equities provided by our appointed Shariah advisor (Amanie Advisors).

Source: Maybank Asset Management Singapore Pte Ltd, April 2022